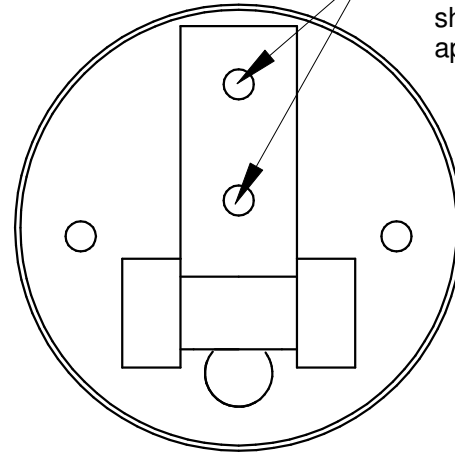
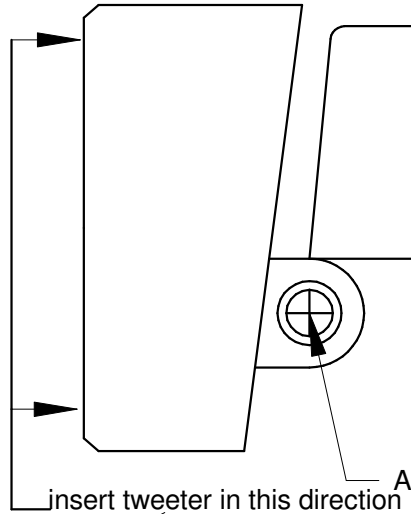
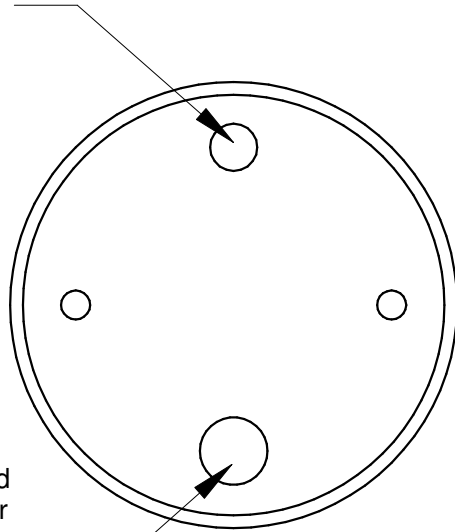


FRONT

SIDE

BACK

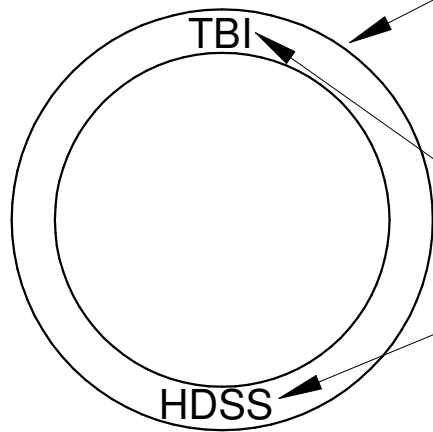


Small Hole - Black
Remove plastic cover
from terminal before
inserting the wire.
Connect wire to -
terminal before
pressing tweeter
into adapter. .

Large Hole + Red
Remove plastic cover
from terminal before
inserting the wire.
Connect wire to +
terminal before
pressing tweeter
into adapter.

Bracket mounting
holes - fold mounted
tweeter down to access
screw holes. Use
included
sheet metal screws or other
appropriate fastener.

**SURFACE MOUNT
VARIABLE ANGLE
ADAPTER**



Position Logos In Vertical Position
Terminals must be located
in deep portion of adapter

*Remove the clear plastic insulation from the
speaker leads when using this adapter.
Wires will not fit through the holes provided
and terminals need the extra depth for tweeter
to fit completely into adapter.

Once tweeter is in the proper position tighten
the adjustment screw to secure it.